

RSFL-50W-8A



Parameters

Electrical

Model No.	RSFL-50W-8A
Power	50W
Input Voltage	200-305VAC, 50/60Hz
Input Current	0.227A/220VAC, 0.181A/277VAC
Power Factor	>0.95
Power efficiency	>88%

Optical

Lumens	+Lumen tolerance +/- 5% 5250lm
Lumen Efficiency	105lm/W
CRI	Ra>70
CCT	3000K/4000K 5000K/5700K/6500K
Beam Angles	120°

Physical

IP&IK Rating	IP65 & IK08
Life Span	50000 hours, @25°C
Product Size	L265×W220×H50mm
N.W./Pcs	1.9kg
Carton Size	360*320*280mm
Pcs/CTN	5pcs/ctn
G.W./CTN	11.0kg
Heat-sink Material	Aluminum
Lens Material	Tempered glass
LED Driver	Meanwell Driver
LED Chip	Lumileds Luxeon 3030

RSFL-80W-8A



Parameters

Electrical

Model No.	RSFL-80W-8A
Power	80W
Input Voltage	200-305VAC, 50/60Hz
Input Current	0.364A/220VAC, 0.289A/277VAC
Power Factor	>0.95
Power efficiency	>88%

Optical

Lumens	+Lumen tolerance +/- 5% 8400lm
Lumen Efficiency	105lm/W
CRI	Ra>70
CCT	3000K/4000K 5000K/5700K/6500K
Beam Angles	120°

Physical

IP&IK Rating	IP65 & IK08
Life Span	50000 hours, @25°C
Product Size	L300×W245×H55mm
N.W./Pcs	3.00 kg
Carton Size	400*300*370mm
Pcs/CTN	5pcs/ctn
G.W./CTN	16.50 kg
Heat-sink Material	Aluminum
Lens Material	Tempered glass
LED Driver	Meanwell Driver
LED Chip	Lumileds Luxeon 3030

RSFL-100W-8A



Parameters

Electrical

Model No.	RSFL-100W-8A
Power	100W
Input Voltage	200-305VAC, 50/60Hz
Input Current	0.455A/220VAC, 0.361A/277VAC
Power Factor	>0.95
Power efficiency	>88%

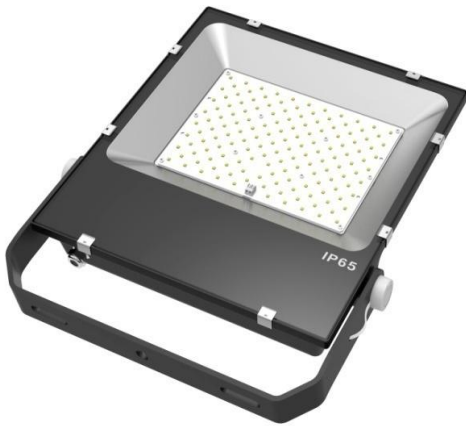
Optical

Lumens	+Lumen tolerance +/- 5% 10500lm
Lumen Efficiency	105lm/W
CRI	Ra>70
CCT	3000K/4000K 5000K/5700K/6500K
Beam Angles	120°

Physical

IP&IK Rating	IP65 & IK08
Life Span	50000 hours, @25°C
Product Size	L345×W295×H60mm
N.W./Pcs	3.85 kg
Carton Size	490*370*120mm
Pcs/CTN	1pcs/ctn
G.W./CTN	4.50 kg
Heat-sink Material	Aluminum
Lens Material	Tempered glass
LED Driver	Meanwell Driver
LED Chip	Lumileds Luxeon 3030

RSFL-150W-8A



Parameters

Electrical

Model No.	RSFL-150W-8A
Power	150W
Input Voltage	200-305VAC, 50/60Hz
Input Current	0.682A/220VAC, 0.542A/277VAC
Power Factor	>0.95
Power efficiency	>88%

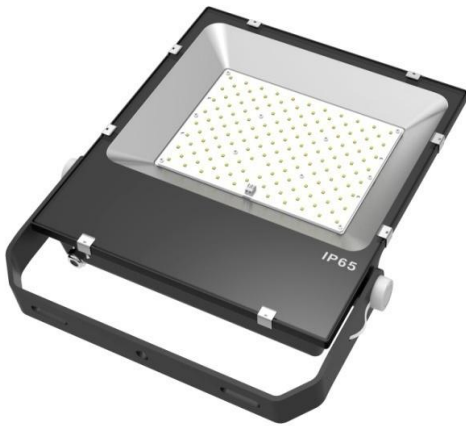
Optical

Lumens	+Lumen tolerance +/- 5% 15750lm
Lumen Efficiency	105lm/W
CRI	Ra>70
CCT	3000K/4000K 5000K/5700K/6500K
Beam Angles	120°

Physical

IP&IK Rating	IP65 & IK08
Life Span	50000 hours, @25°C
Product Size	L365×W330×H60mm
N.W./Pcs	5.45kg
Carton Size	510*400*120mm
Pcs/CTN	1pcs/ctn
G.W./CTN	5.90kg
Heat-sink Material	Aluminum
Lens Material	Tempered glass
LED Driver	Meanwell Driver
LED Chip	Lumileds Luxeon 3030

RSFL-200W-8A



Parameters

Electrical

Model No.	RSFL-200W-8A
Power	200W
Input Voltage	200-305VAC, 50/60Hz
Input Current	0.909A/220VAC, 0.722A/277VAC
Power Factor	>0.95
Power efficiency	>88%

Optical

Lumens	+Lumen tolerance +/- 5% 23000lm
Lumen Efficiency	115lm/W
CRI	Ra>70
CCT	3000K/4000K 5000K/5700K/6500K
Beam Angles	120°

Physical

IP&IK Rating	IP65 & IK08
Life Span	50000 hours, @25°C
Product Size	L400×W360×H60mm
N.W./Pcs	6.0kg
Carton Size	550*410*120mm
Pcs/CTN	1pcs/ctn
G.W./CTN	6.45kg
Heat-sink Material	Aluminum
Lens Material	Tempered glass
LED Driver	Meanwell Driver
LED Chip	Lumileds Luxeon 3030